

Document Reference: AN060006H2

Title: How To Upload/Download parameters using Mint WorkBench

Required Equipment:

- H2 Drive Series: IHH, ZHH, SHH.
- Host Computer.
- USB Cable.
- Mint WorkBench file and drivers. These can be uploaded from the Internet @ www.baldormotion.com

Introduction:

Uploading and downloading files using Workbench is just a matter of a few simple clicks of your mouse. *Uploading* refers to *Saving* parameters and *Downloading* is the method for *Retrieving* them.

Procedure:

1. Connect the drive and pc with customer supplied USB cable. Figure 1.

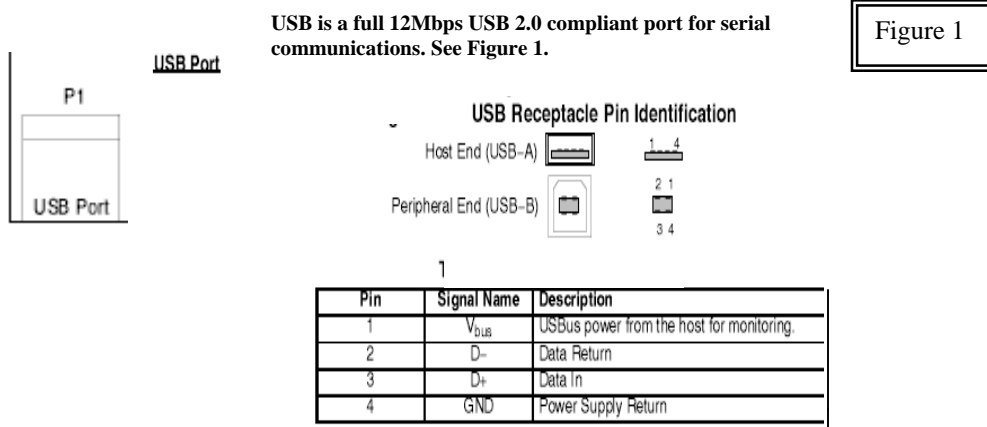
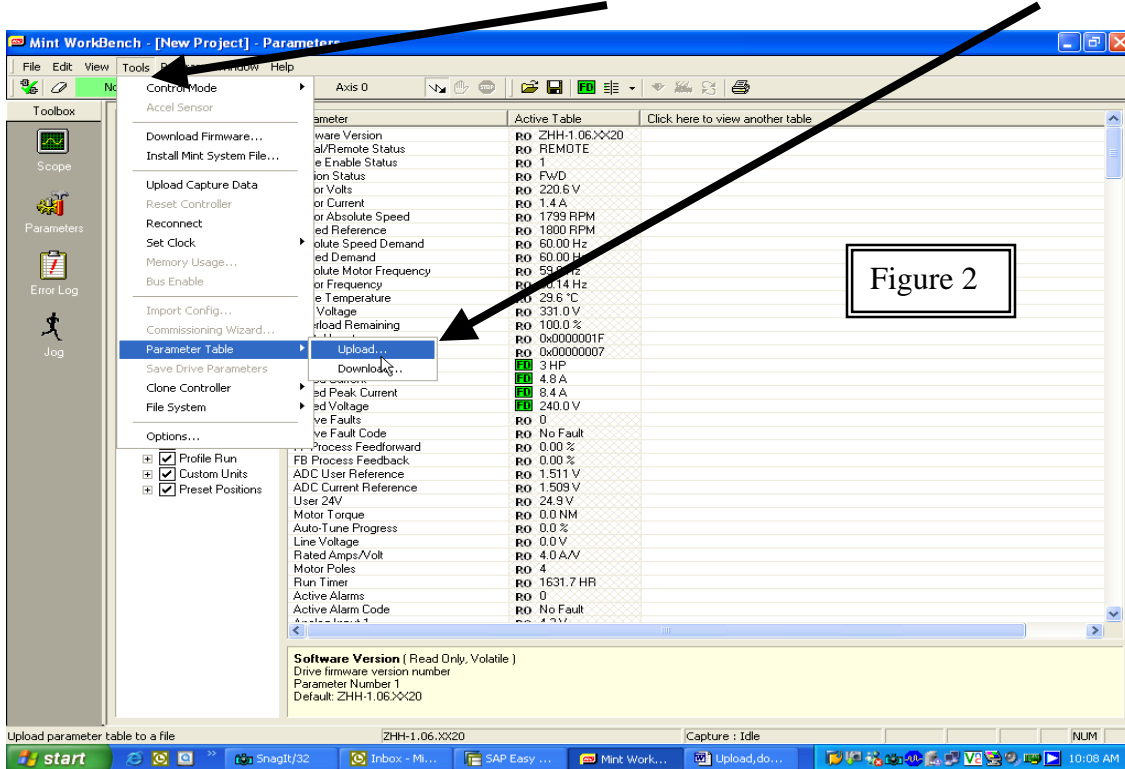
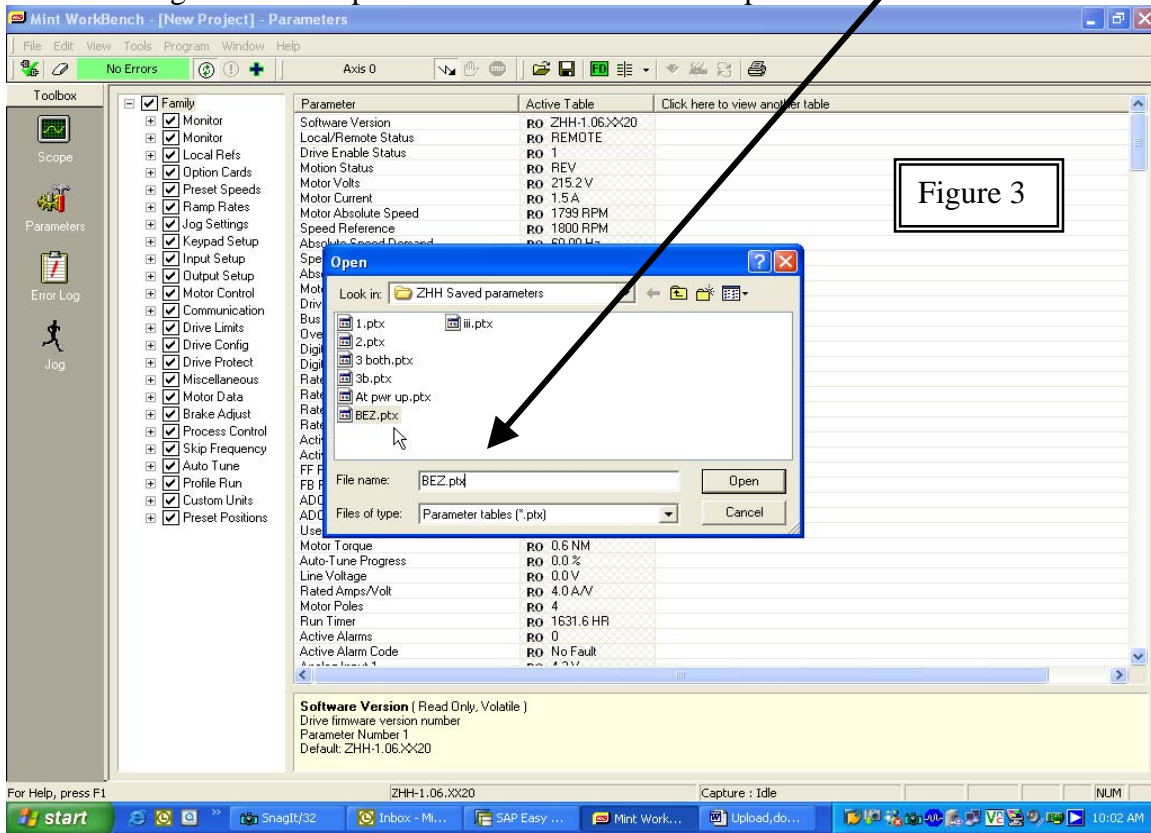


Figure 1

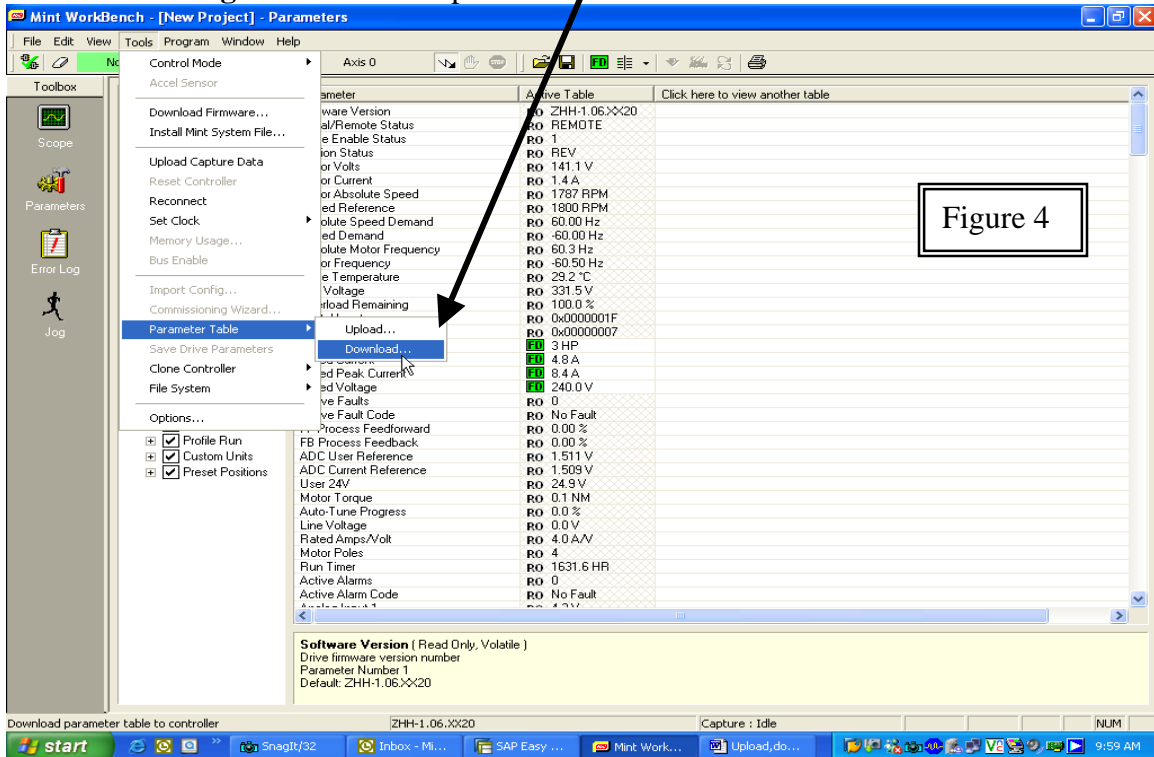
2. Select Tools on the Mint WorkBench toolbar>Parameter Table>Upload..



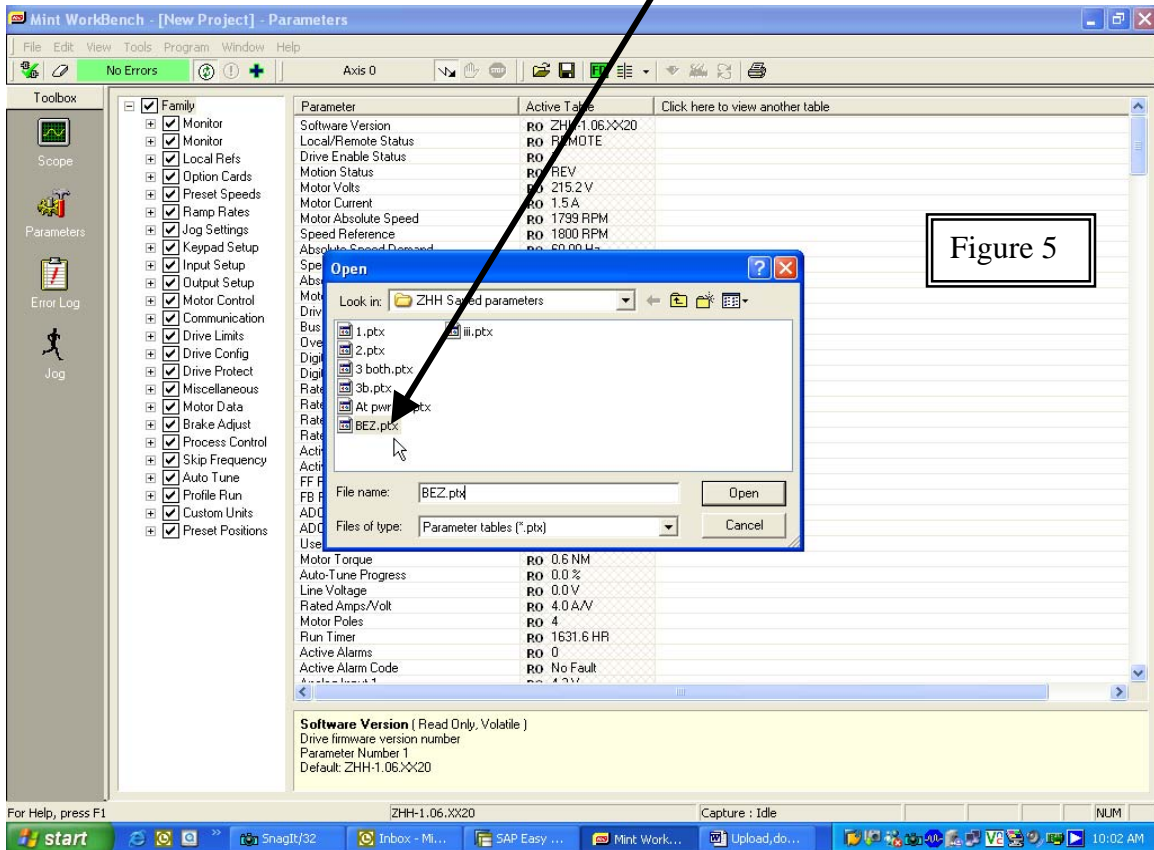
3. Change File name .ptx to another name. For example: BEZ



4. Downloading retrieves saved .ptx files



5. Click on file name Download to H2 control.



Note: When retrieving files insure that the drive is auto-tuned for the new parameter set.
