

Mint^{Multi-Tasking} MT Application Note

AN00131-001: Updating Firmware on a Baldor HMI

Related Applications or Terminology

- *HMI Programming – HMI Designer 6*
- *Serial Baldor HMI*
- *CANOpen Baldor HMI*

References

- *AN112-003 – Quick Start Guide for Serial Baldor HMI (Designer 6)*
- *AN111-003 – Quick Start Guide for CANOpen Baldor HMI (Designer 6)*

Overview

This document describes the procedure to update an HMI panel's firmware to the latest version.

NOTE: This procedure is only valid for panels with firmware of type FW60 or FW58. The firmware type is found on the HMI's product label.

Supported Controllers

<i>NextMove</i> PCI	<input checked="" type="checkbox"/>
<i>NextMove</i> BX ^{II}	<input checked="" type="checkbox"/>
<i>NextMove</i> ST	<input checked="" type="checkbox"/>
<i>NextMove</i> ES	<input checked="" type="checkbox"/>
<i>MintDrive</i> ^{II}	<input checked="" type="checkbox"/>
<i>Flex+Drive</i> ^{II}	<input type="checkbox"/>

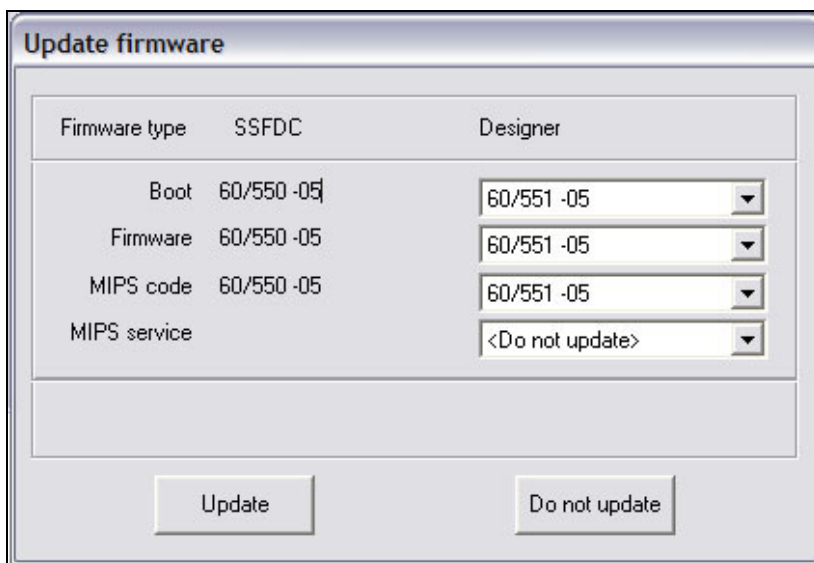
Relevant Keywords

Mint^{MT} Multi-Tasking Application Note

Using Designer 6 to send new files to the SSFDC card ready for panel updates

Firstly, extract the latest firmware from the .zip file (FW60-V551.ZIP or FW58-V551.ZIP) to the Firmware folder in Designer 6 (for example "C:\Program files\Baldor HMI Software\Firmware"), this file contains the required Bootloader, Firmware and MIPS files for the update process. Once these files are in place connect to the HMI panel as normal using Designer 6 via the standard HMI programming cable (CBL034-501) and put the HMI into Configuration mode.

Then create a new or open a project for use with the panel, select the option to download the project file. You should now see the Update Firmware pop-up window appear as seen here:

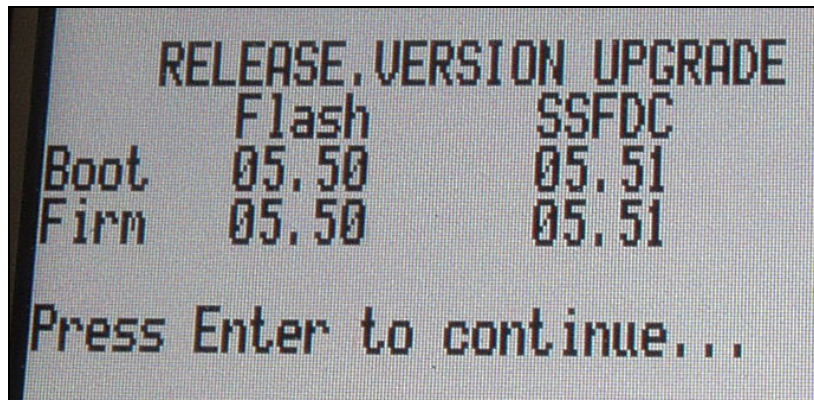


Ensure that the options in the drop down lists are set to the required versions then click Update. The Designer software will now begin downloading the Firmware, Bootloader and MIPS to the SSFDC card, as well as downloading the project files as required.

Mint^{Multi-Tasking} MT Application Note

Updating the panel firmware from the SSFDC card

Once the project has been downloaded and the start command received, put the panel back into configuration mode. From configuration mode press and hold the up arrow button for 2 seconds, a new menu should be seen as below:



When the enter button is pressed you will be presented with a choice of either pressing the up arrow again to upload the firmware from the SSFDC card to the panel's flash memory, or alternatively simply waiting so the panel uses the existing files. If the up arrow is pressed, the panel will proceed to upload the required files from the SSFDC card, once complete the panel will automatically restart and begin running the last project file downloaded.

Further information on this process is available in the Help File of Designer 6